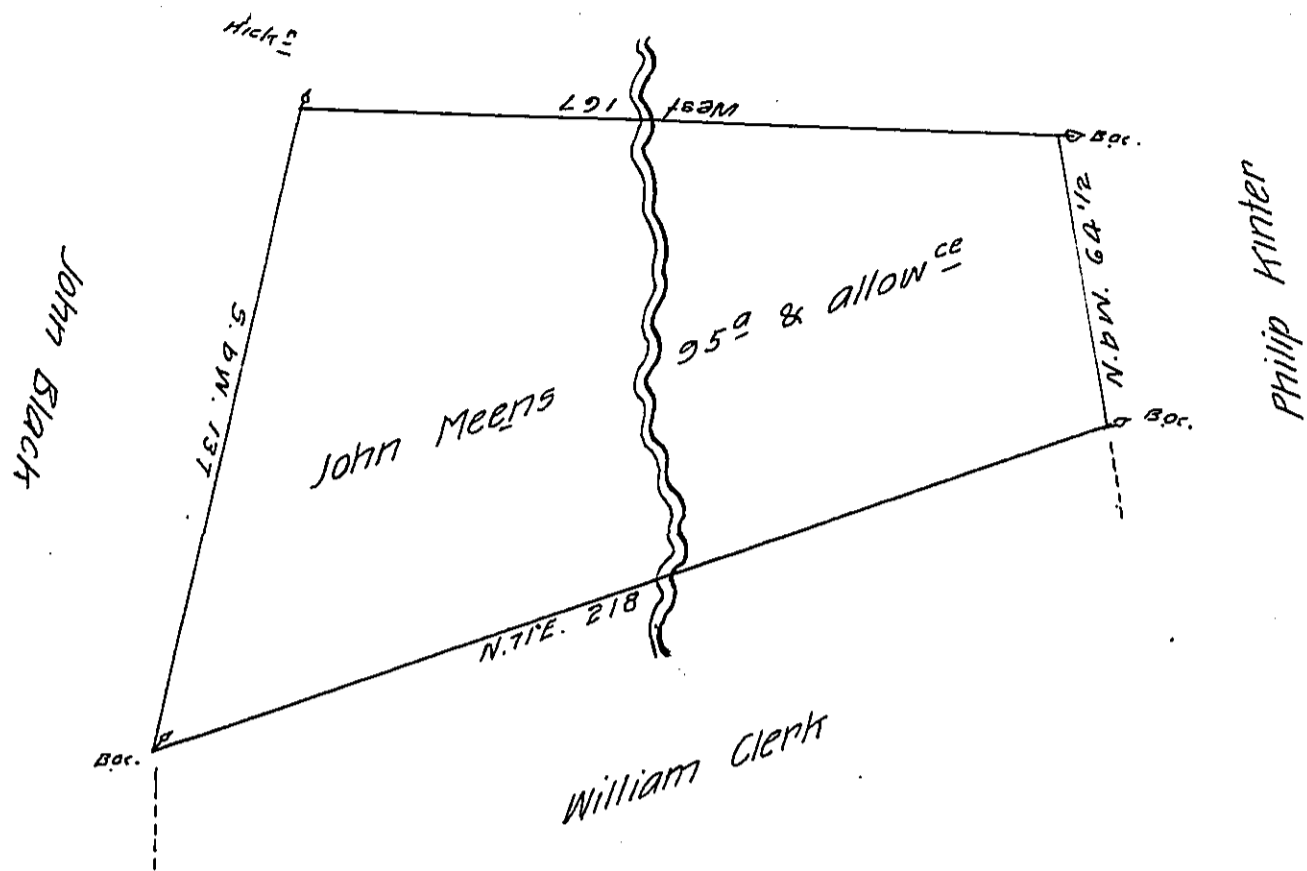


Peters' Mountain



Copper Mines, Survey'd for John Meens on the 10<sup>th</sup> day of October 1767. Containing Ninety five acres & the usuall allowance of six p. Ct. Situate in Upper Paxton Town<sup>sh</sup> Lancaster County. By Application of the 21<sup>st</sup> day of April 1767. No. 2520.

p.- Bartrem Galbraith D.S.

To Jno. Lukens Esq<sup>r</sup> Sur<sup>or</sup> Gen<sup>l</sup>

IN TESTIMONY that the above is a copy of the original remaining on file in the Department of Internal Affairs of Pennsylvania, made conformably to an Act of Assembly approved the 16th day of February, 1833, I have hereunto set my Hand and caused the Seal of said Department to be affixed at Harrisburg, this twenty third day of January 1906

*Joac N. Brown*  
 Secretary of Internal Affairs.